

# Chitkara Exports

(Apparels)

2841/31, Naseeb Enclave, Azad Gas Road,  
Haibowal Kalan Ludhiana

## INTRODUCTION

Welcome to Chitkara Exports,

A leading exporter based in Ludhiana, specializing in high-quality apparel for diverse brands, suppliers, and contract manufacturing. Situated in the vibrant hub of the textile and garment industry, we take pride in offering a comprehensive collection for both men and women, spanning all seasons from summer to winter.

At Chitkara Exports, we stand out not only for our ready-made collection but also for our expertise in contract manufacturing services. Whether you're a brand or supplier looking for customized apparel production, our professional team is dedicated to meeting your specific requirements with meticulous attention to detail.

We are also delighted to share that we serve as the export partner at M/s Dhariwal Products manufacturing since 1991, the proud owner of the esteemed Brand Wellman. As in-house manufacturers of a wide range of products, including t-shirts, polos, dry-fit t-shirts, sweatshirts, dry-fit jackets, lowers, and school uniforms, we bring a wealth of expertise to the table.

Moreover, we understand the importance of flexibility in manufacturing, and that's why we offer a minimum order quantity (MOQ) starting from as low as 2000 pieces, depending on the product. This flexibility allows us to cater to a diverse range of clients and their unique needs.

Choose Chitkara Exports as your apparel partner and benefit from our extensive expertise, exceptional quality, and reliable contract manufacturing services. Contact us today to explore our superior apparel range and discuss how we can tailor our services to suit your specific requirements. Experience the excellence that defines Chitkara Exports in the dynamic world of fashion!

Infrastructure For Apparels









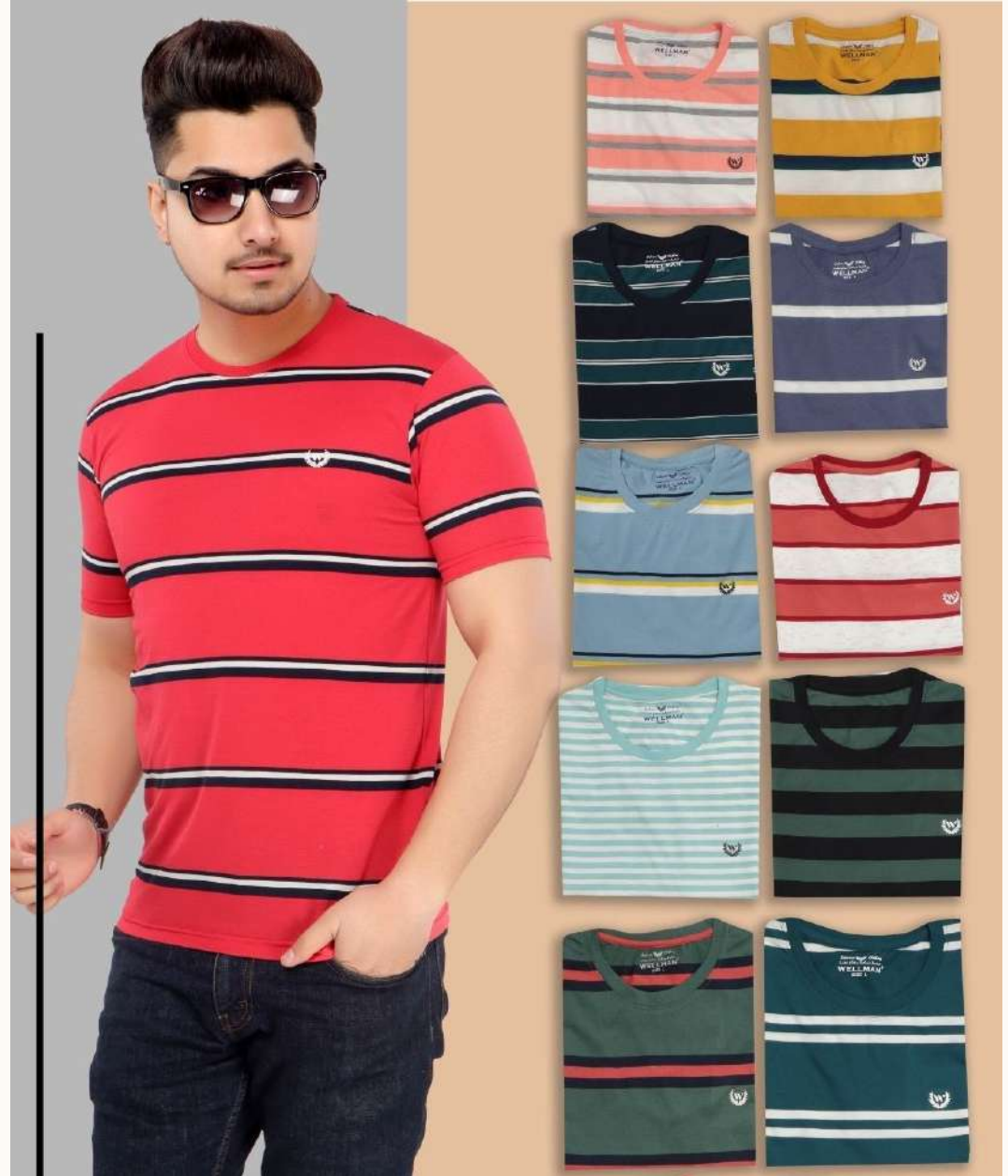
**NOTABLE  
T-SHIRT**



Products



Products





# Products



# Products



# Products



## Products





**NOTABLE  
T-SHIRT**



Products



Products



Products



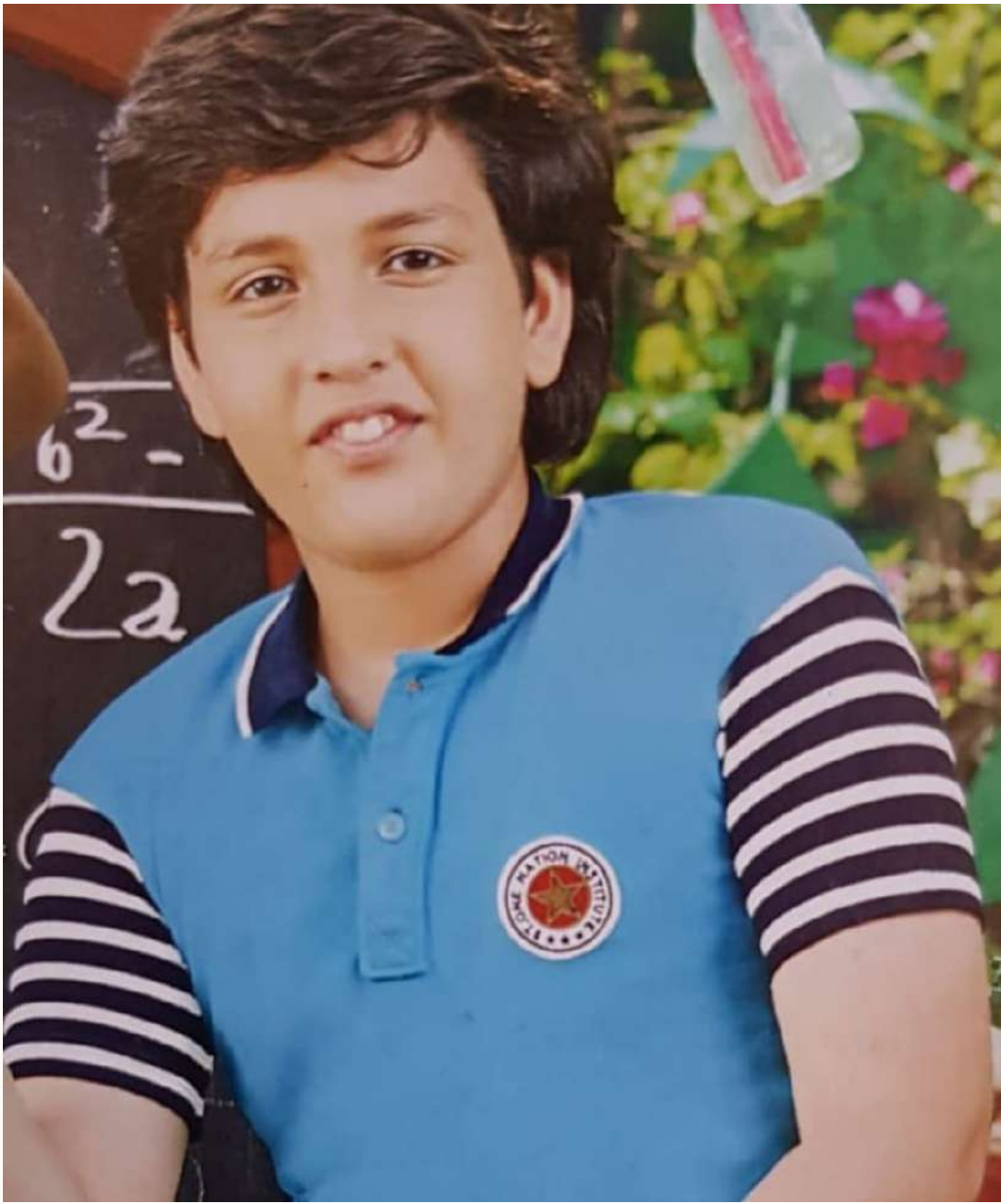


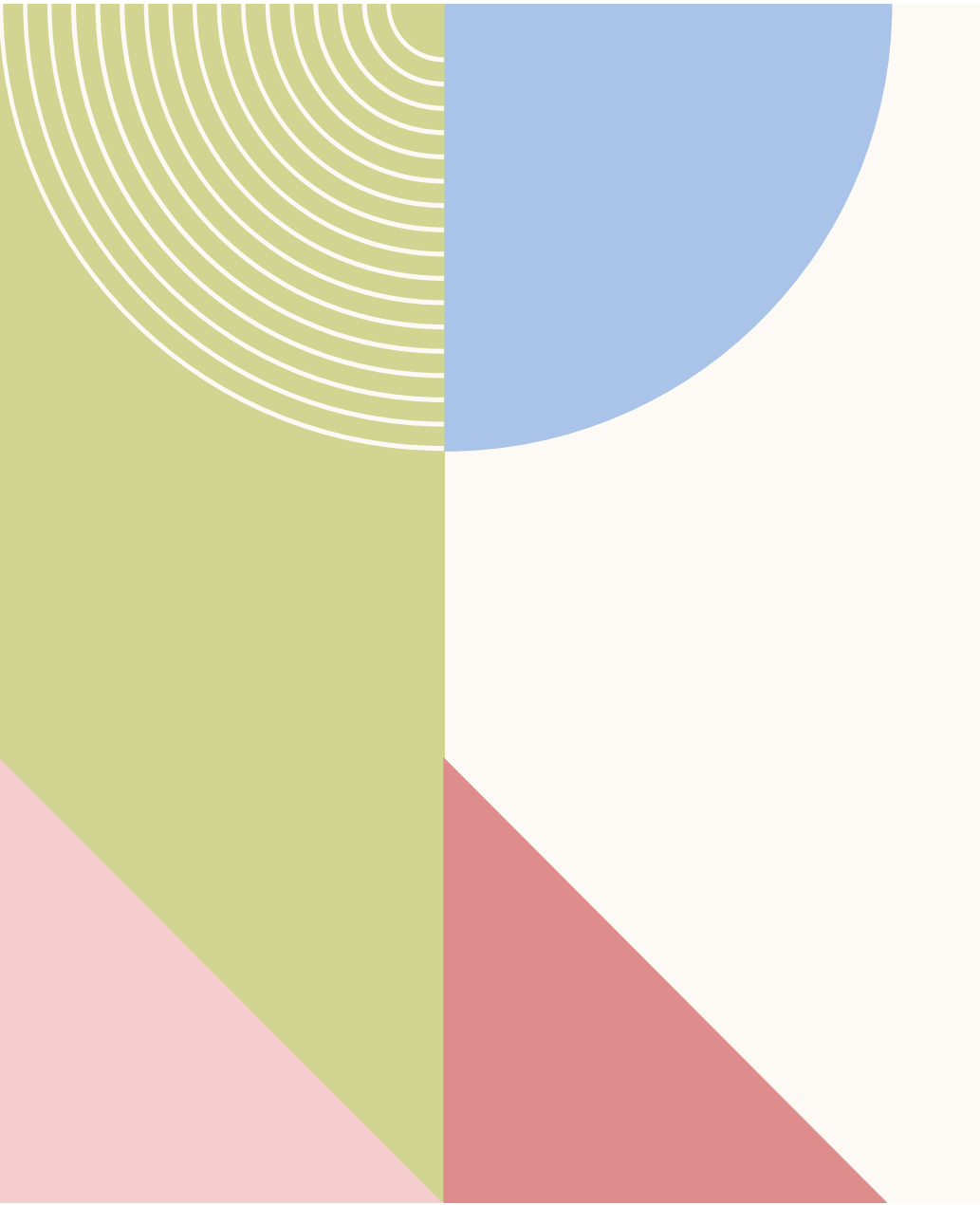
Products



Products







**Wellman**<sup>®</sup>  
DHARIWAL PRODUCTS

A promotional image for Wellman polo shirts. On the right, a man with dark hair and sunglasses is wearing a red polo shirt and blue jeans. On the left, a grid of 14 polo shirts in various colors is displayed. The colors include blue, black, light blue, yellow, dark red, light pink, beige, light blue, dark red, dark green, black, and light green. The Wellman logo and brand name are at the top.





DISTRESSED  
**TO PERFECTION**

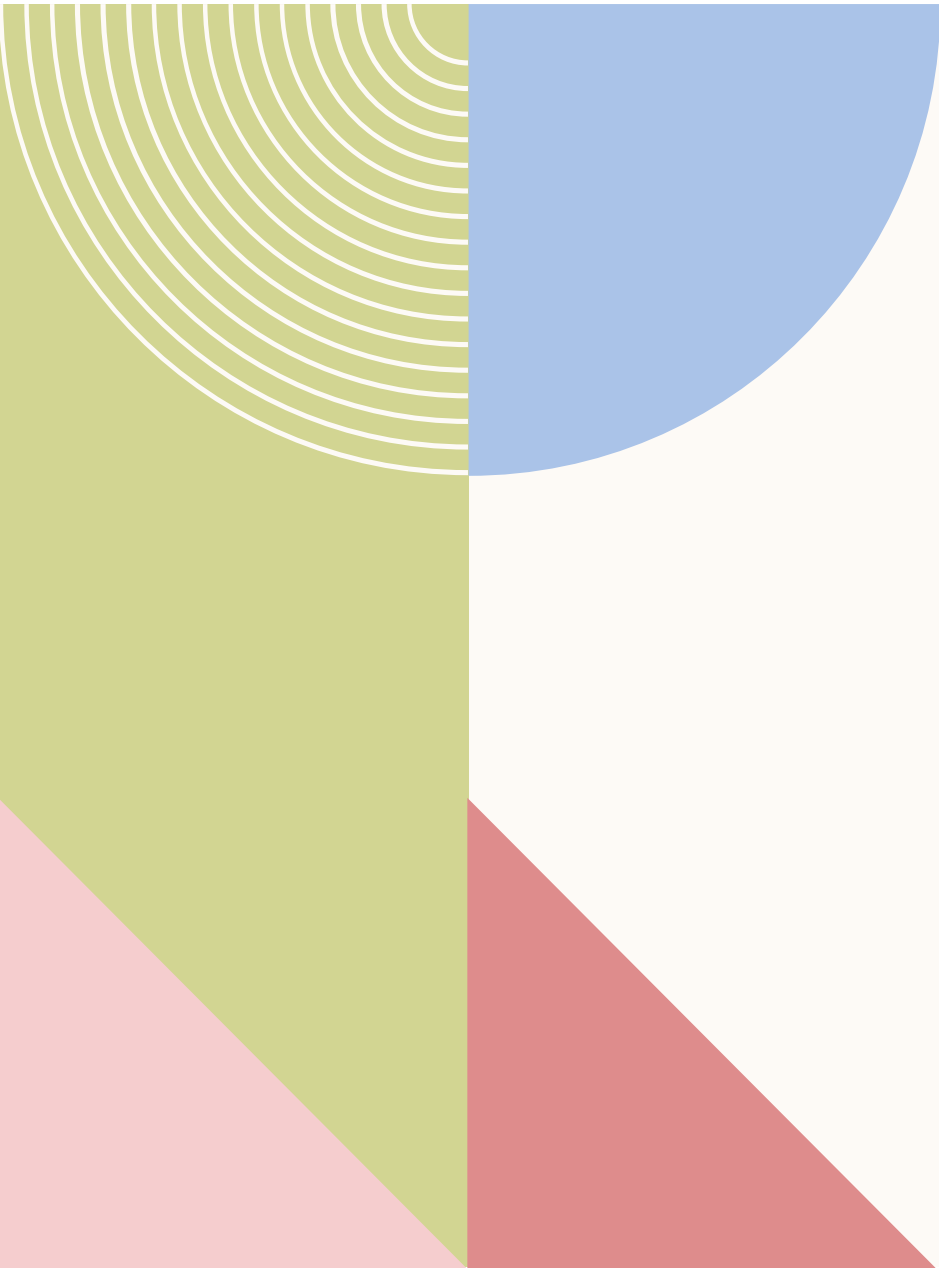
MEET OUR NEW ARRIVALS/ SMART. COORDINATED LOOKS



DISTRESSED  
**TO PERFECTION**

MEET OUR NEW ARRIVALS/ SMART. COORDINATED LOOKS





DISTRESSED  
**TO PERFECTION**

MEET OUR NEW ARRIVALS/ SMART, COORDINATED LOOKS





DISTRESSED  
**TO PERFECTION**

MEET OUR NEW ARRIVALS/ SMART. COORDINATED LOOKS













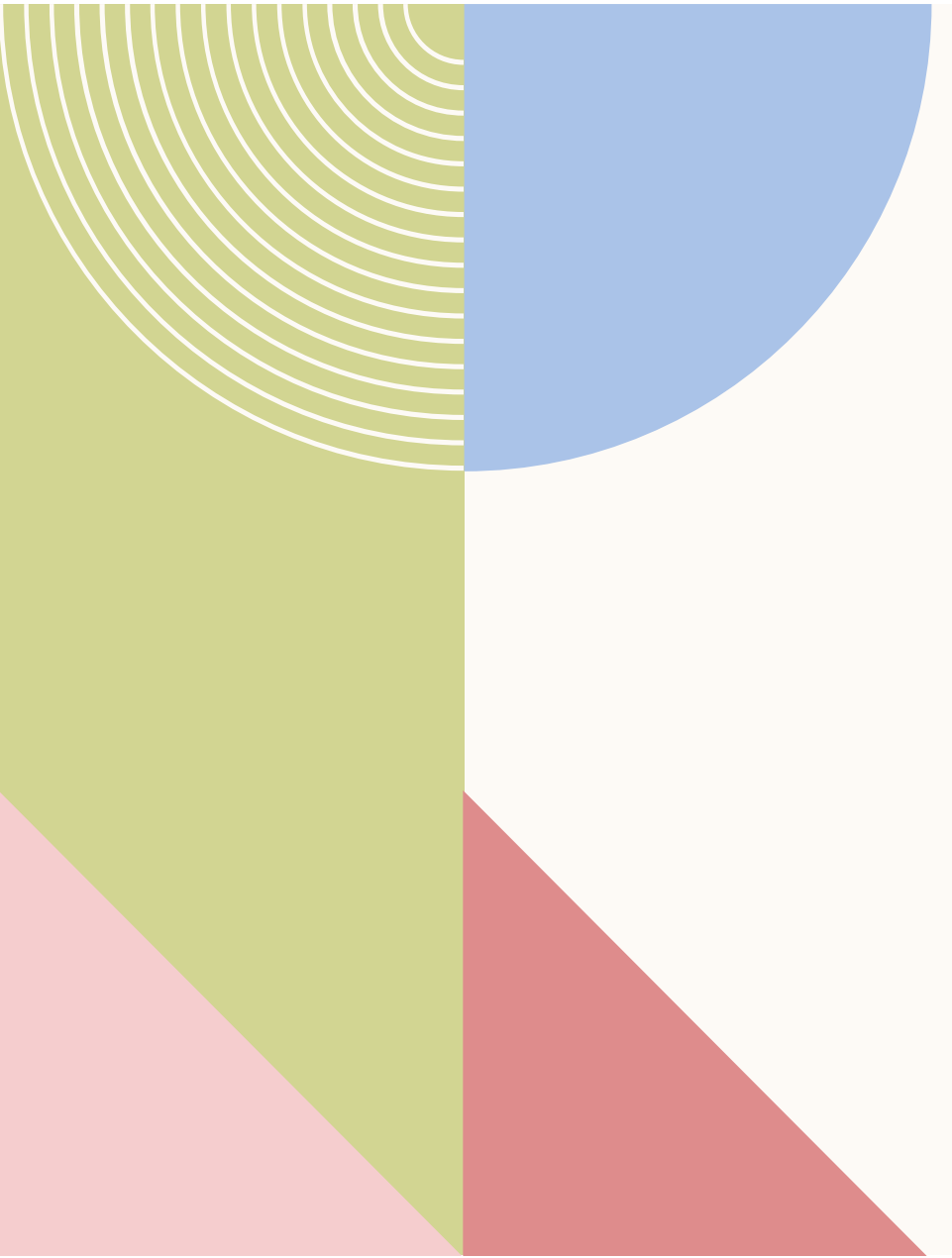


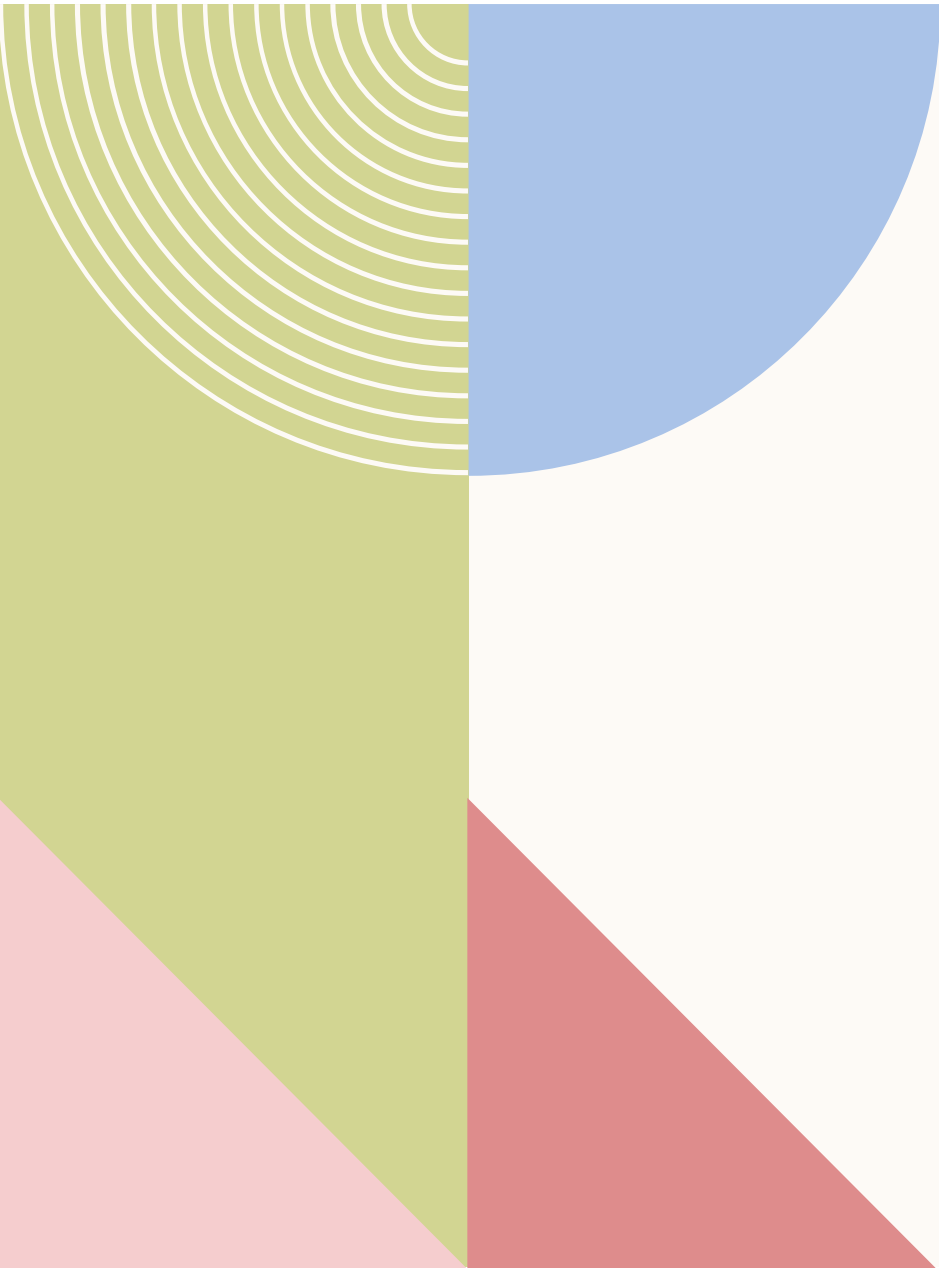






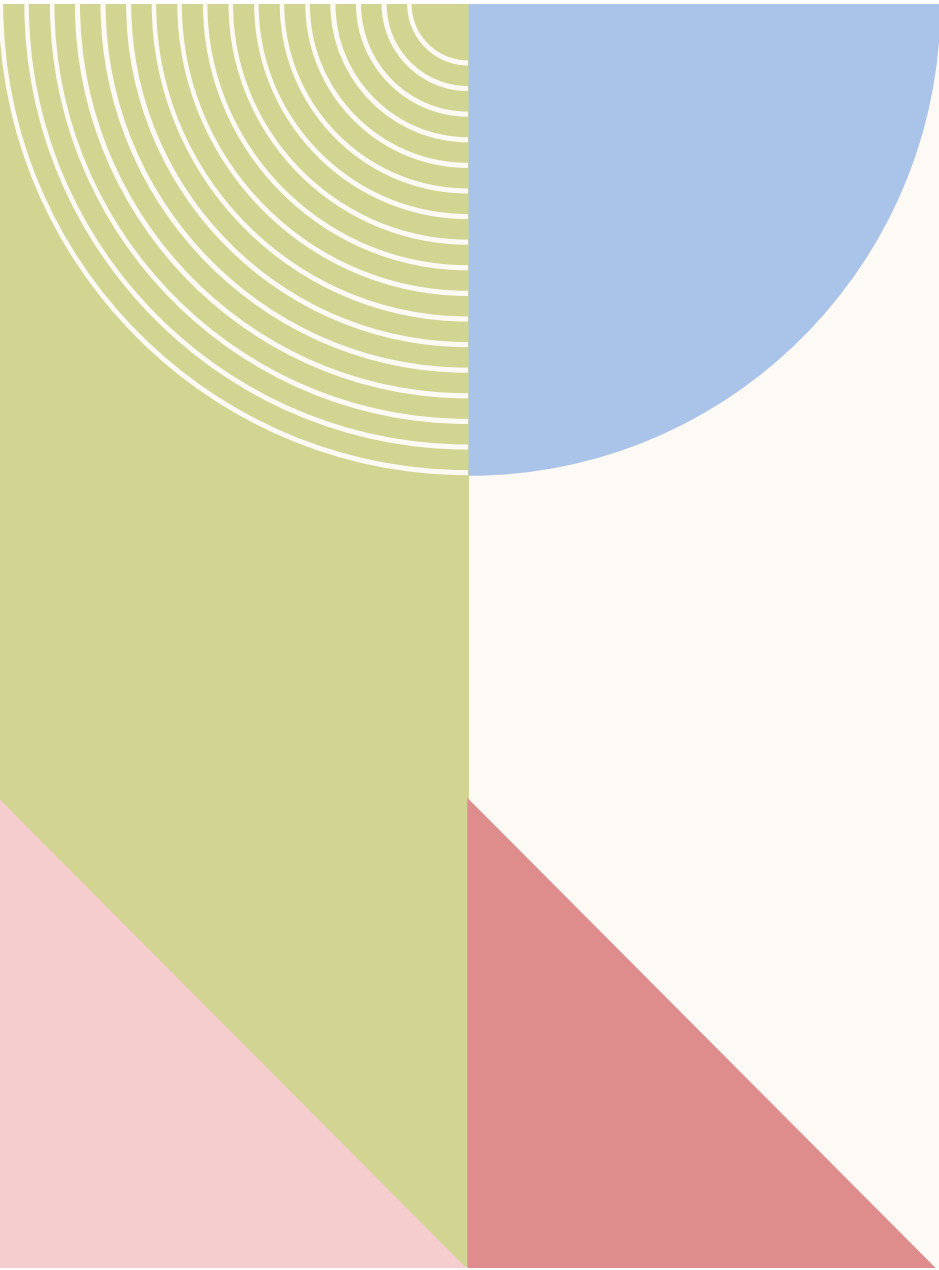












## Meet Our Team For Apparels





# THANK YOU

Mohit Chitkara

Chitkara Exports

2841/31, Naseeb Enclave, Azad Gas Road, Haibowal  
Kalan, Ludhiana

(M)91-9877659808 and (Whatsapp) 91-9877659808

[www.chitkaraexports.com](http://www.chitkaraexports.com)

Email- [sales@chitkaraexports.com](mailto:sales@chitkaraexports.com)